

# ALEX Quick Start-Up Guide

This is the Quick Start-Up Guide for ALEX that will help you get up and running with your new simulator in just a few short steps. For more detailed instructions on how to use ALEX, please refer to the ALEX "Instructions for Use" included within the package and the ALEX Help Website, <http://alex.simulaids.com/en/help>.

## Included Items

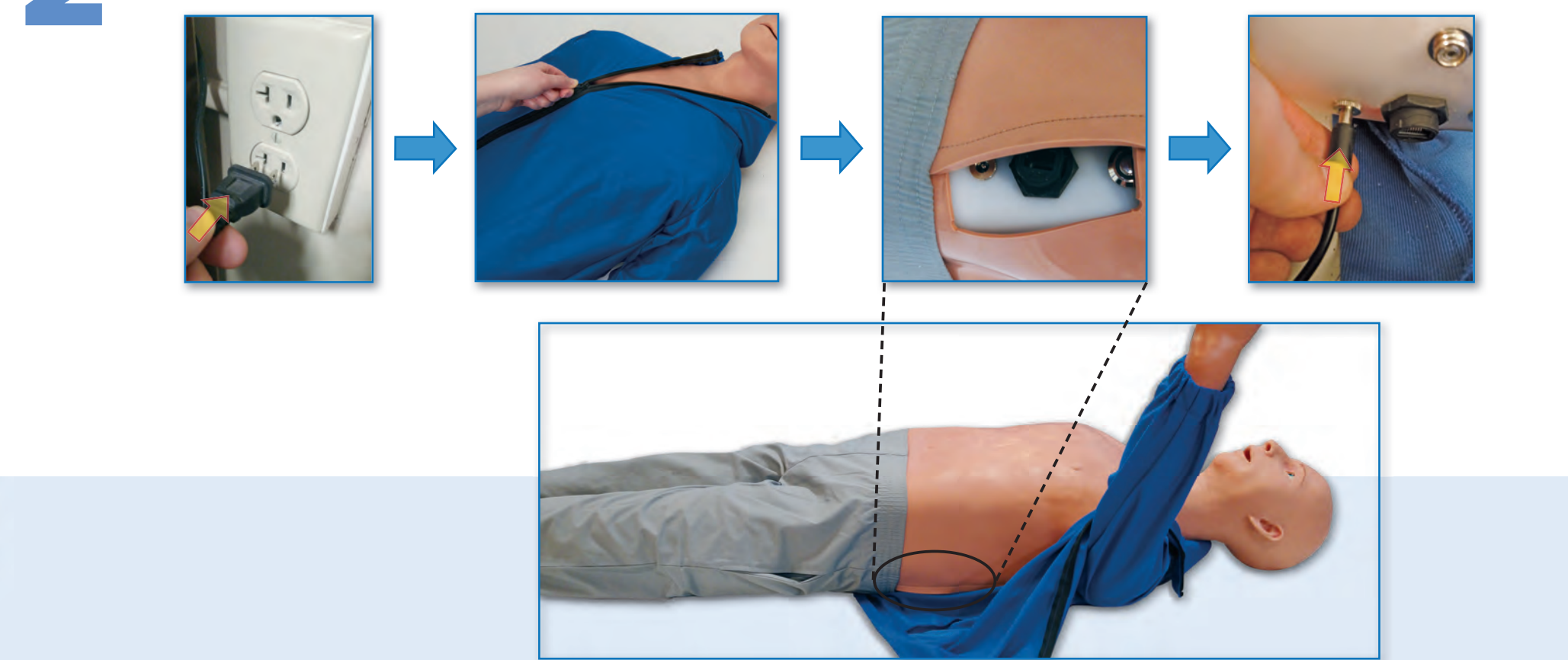
ALEX — Fully Assembled Patient Communication Simulator



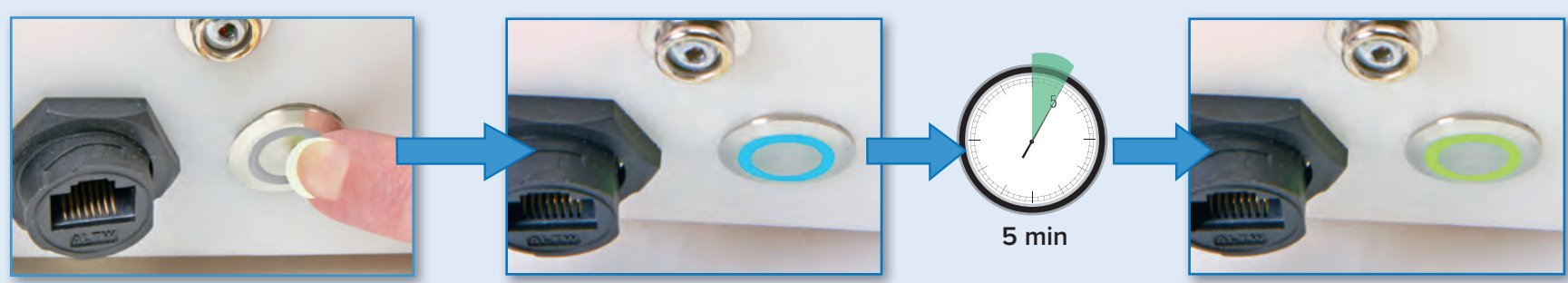
## 1 Remove ALEX from Shipping Container



## 2 Plug ALEX In



## 3 Power ALEX On





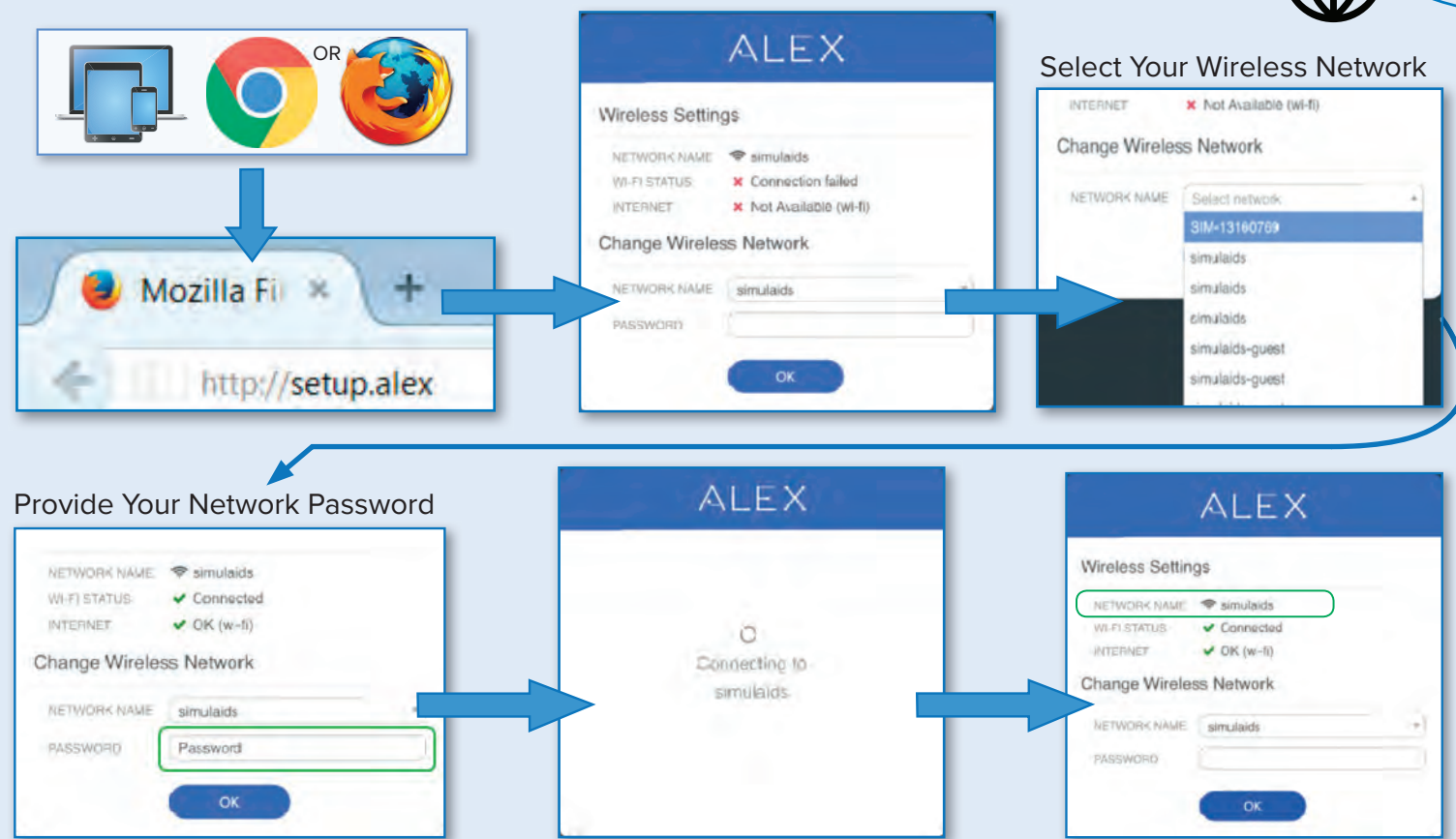
# 4A-1 Connect ALEX — Wireless Connection

## Connecting Instructor Device to ALEX



# 4A-2 Connect ALEX — Wireless Connection

## Connecting ALEX to Your Network

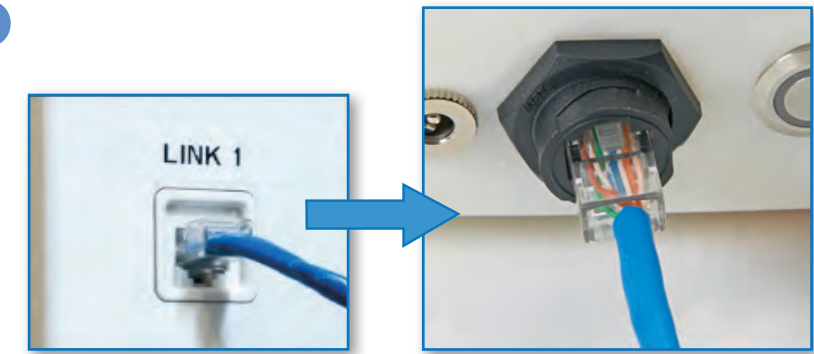


# 4A-3 Connect ALEX — Wireless Connection

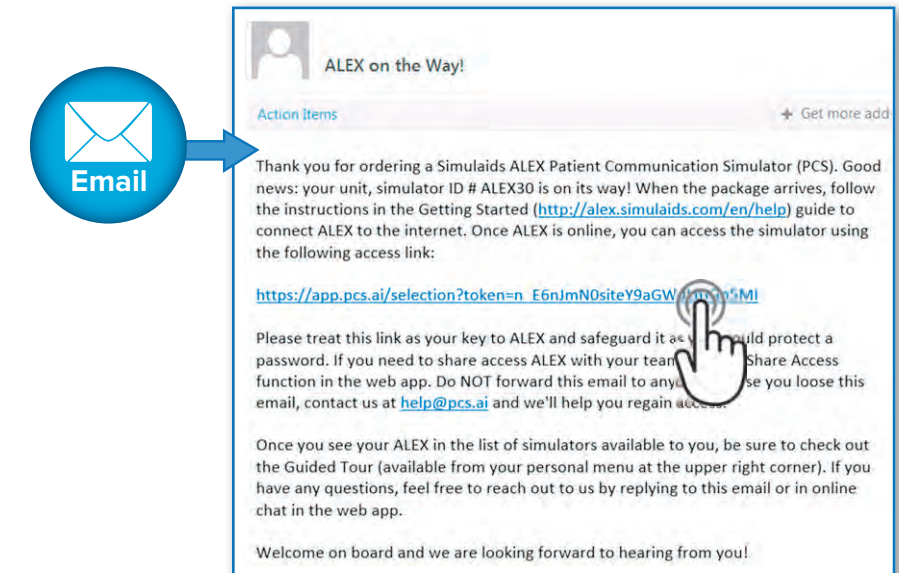
## Connecting Instructor's Device to Your Network



# 4B Connect ALEX — Wired Connection



# 5 Open ALEX's Web App



To Order Call:  
**heartsmart.com**  
**800.422.8129**  
 info@heartsmart.com  
**www.heartsmart.com**